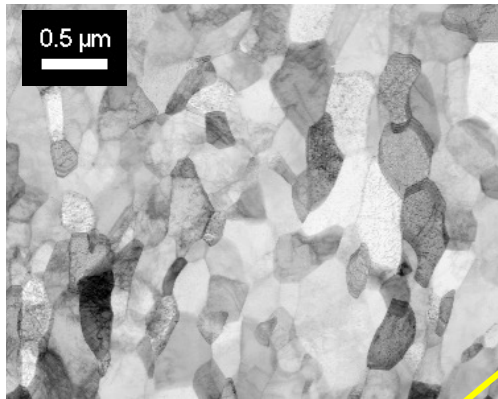


# ASTAR 4D-SPED : Correlation coefficient maps

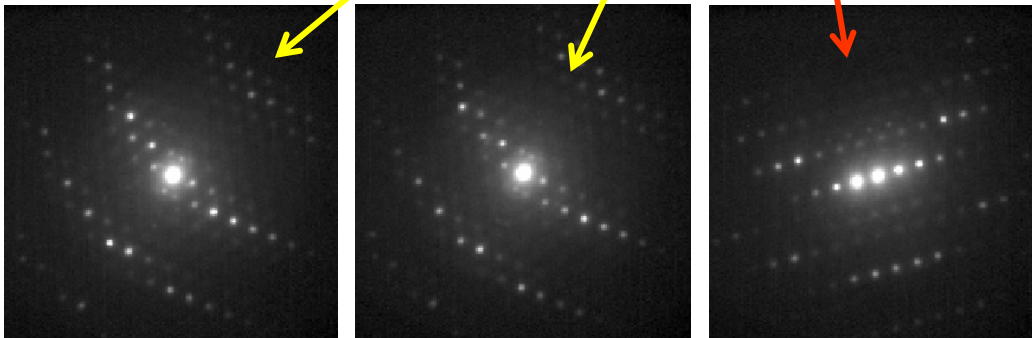
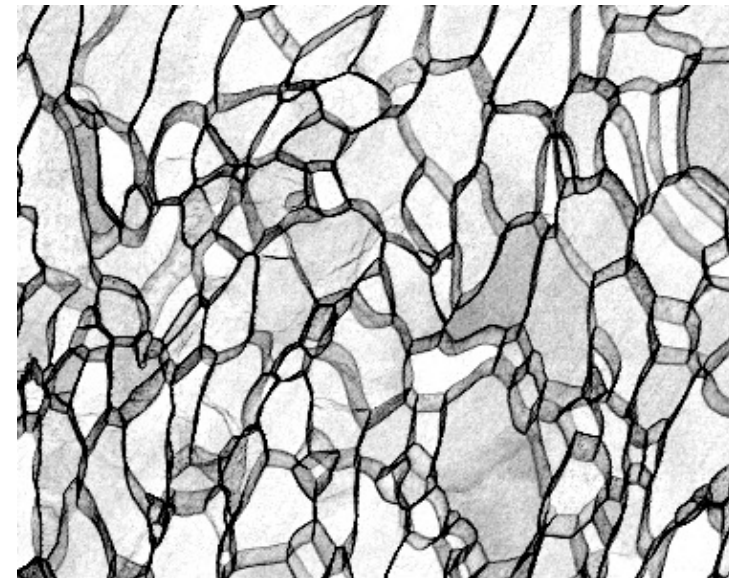
*Virtual Bright-Field*



*Orientation map*



**Deformed Steel**



ASTAR Cross-correlation weights similarities between successive diffraction patterns

Credits: S. Descartes LaMCOs, Lyon

$$C_{iso}(i, j) = \sqrt{\frac{\sum_{x,y} [p^{i,j}(x, y) - p^{i+1,j}(x, y)]^2 + \sum_{x,y} [p^{i,j}(x, y) - p^{i,j+1}(x, y)]^2}{2N}}$$